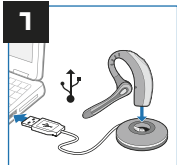




# READ ME FIRST!

## PLANTRONICS VOYAGER™ 510-USB QUICK START GUIDE



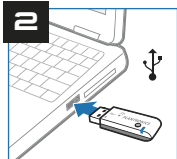
**IMPORTANT:** Please read full User Guide on CD

### 1. Charging

Before using, you must charge headset.

20 minutes = minimum charge

3 hours = full charge



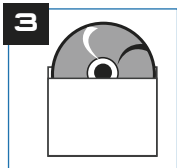
See page 5 of User Guide on CD for additional charging options.

### 2. Powering and Pairing

The USB Bluetooth adapter is automatically powered on after inserting into USB port.

Headset and USB Bluetooth adapter are already paired.

To use headset with your Bluetooth phone, you must first pair them. See page 7 of User Guide on CD.



### 3. Installing PerSonoCall Software

Insert CD supplied and follow instructions on screen. For configuration options, see page 10 of User Guide on CD.

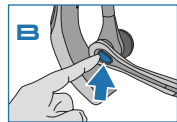


### 4. Using Your Headset

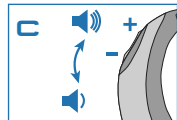
A. TURN HEADSET ON OR OFF: press and hold power/mute button for 3 seconds.

B. ANSWER OR END A CALL: press call control button.

C. ADJUST VOLUME: press + or - buttons.



See complete User Guide on CD.



### Technical Assistance:

Visit [www.plantronics.com/support](http://www.plantronics.com/support), or:

- From US call: **866-363-BLUE (2583)**
- From Australia, call: **1 800 793 150** or **1800 428 526**
- From New Zealand, call: **00 800 5444 6600**





**UK Please read User Guide on CD first!**

**DE Lesen Sie zuerst das Benutzerhandbuch auf der CD.**

**DK Læs først brugervejledningen på cd'en!**

**ES Lea primero la Guía del usuario disponible en el CD.**

**FI Lue ensin CD-levyllä toimitettu käyttöopas.**

**FR Veuillez lire au préalable le Guide de l'utilisateur fourni sur le CD!**

**IT Leggere prima la Guida dell'utente disponibile sul CD!**

**NL Lees eerst de gebruikershandleiding op de cd!**

**NO Les brukerveiledningen på CDen først!**

**PT Antes, leia o Manual do Utilizador no CD!**

**SE Börja med att läsa användarhandboken på cd-skivan!**

**MX Lea primero el Manual del usuario incluido en el CD.**

**BR Leia primeiro o Guia do Usuário fornecido no CD!**

**CA Lisez d'abord le guide de l'utilisateur sur CD!**

**SC 请先阅读 CD 上的用户指南!**

**TC 請先閱讀 CD 上的使用者指南!**

**JA CDに収録されているユーザーガイドを最初にお読みください。**

**KO CD의 사용 설명서를 먼저 읽어 보십시오!**



# AVAYA

**UK Please read User Guide on CD first!**

**DE Lesen Sie zuerst das Benutzerhandbuch auf der CD.**

**DK Læs først brugervejledningen på cd'en!**

**ES Lea primero la Guía del usuario disponible en el CD.**

**FI Lue ensin CD-levyllä toimitettu käyttöopas.**

**FR Veuillez lire au préalable le Guide de l'utilisateur fourni sur le CD!**

**IT Leggere prima la Guida dell'utente disponibile sul CD!**

**NL Lees eerst de gebruikershandleiding op de cd!**

**NO Les brukerveiledningen på CDen først!**

**PT Antes, leia o Manual do Utilizador no CD!**

**SE Börja med att läsa användarhandboken på cd-skivan!**

**MX Lea primero el Manual del usuario incluido en el CD.**

**BR Leia primeiro o Guia do Usuário fornecido no CD!**

**CA Lisez d'abord le guide de l'utilisateur sur CD!**

**SC 请先阅读 CD 上的用户指南!**

**TC 請先閱讀 CD 上的使用者指南!**

**JA CDに収録されているユーザーガイドを最初にお読みください。**

**KO CD의 사용 설명서를 먼저 읽어 보십시오!**